

90.0

85.0

2SIL

10K 10K 4K7
X01 X01

BC 817 BC 807

10K 470R 10K
p 0R

MUR120RLG

MOSFET
STP36
NF06L

33pF

11.0592MHz

2 ST 35
5 deg

4 ST 35
5 deg

4 ST 35
5 deg

NAT010

100R

12FR010E

PIC16F
26K80-1 00

10K

7IS 9

500R 500R

1K 1K
X1 X1

1K 1K 1K
770R 770R 770R

7 SIL

1K 1K
470R

10K 10K
Red

470R 470R
Green

Ind
33uH

470uF
25V

20R
BC

10K 2K2

LS673D

SMS2100

470R
p 0R

470uF
25V

100uF
35V

ES3J

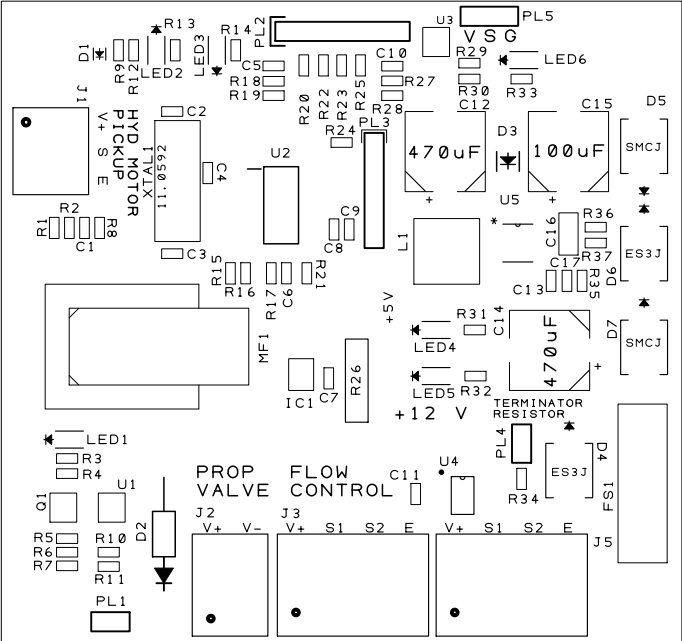
10K 10K
10uF 35V

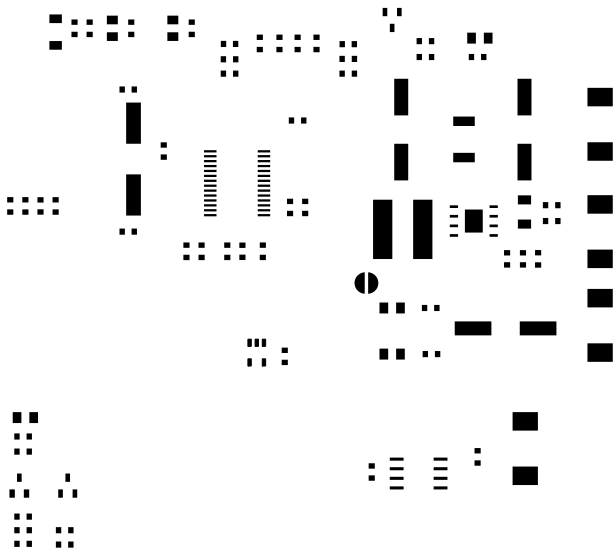
FUSE HOLDER
ATO

SMCJ
26A

ES3J

SMCJ
25V

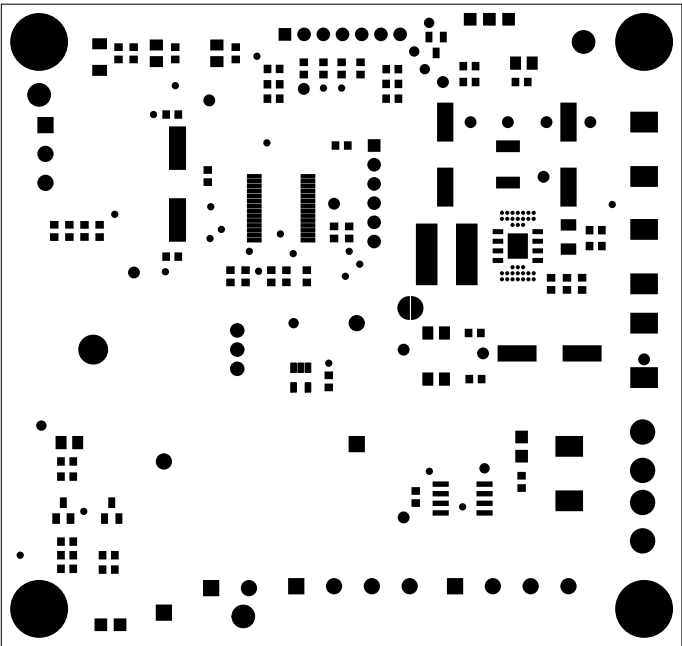


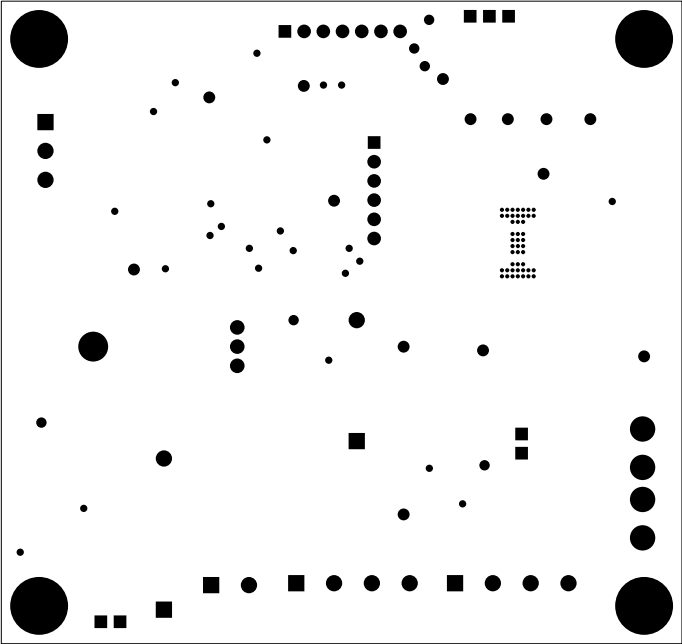




AGRIGEL

● HYD DRIVE





HYDRAULIC DRIVE 02.00
© AGRIGEL

